

Installation instructions
CFM TWAIN 7.00 STI
Windows 98 / ME / 2000 / XP



Revision rights/Reproduction

The information and data included in this manual may be revised without prior notice. Unless otherwise indicated, any company names, other names or data referred to in this manual are entirely imaginary.

No part of this publication may be reproduced or transmitted in any form or by any means, electronically or mechanically, without the prior per-mission in writing from CFM Computer für Menschen GmbH.

Tradenames

Product or company names referred to in this documentation are trade-names of the respective owners.

Copyright © 1994-2003
CFM Computer für Menschen GmbH
D-58456 Witten

Made in Germany

3. Edition, May 2003

This document is subject to change without notice, errors and omissions excepted.



Table of contents

Installation of the CFM 7.00 STI device driver

for Windows 98/ME	4
Preparation	4
First installation	4
Driver update	8
for Windows 2000	13
Preparation	13
First installation	13
Driver update	18
for Windows XP	23
Preparation	23
First installation	23
Driver Update	26



Installation of the CFM 7.00 Still Image (STI) device driver for Windows 98/ME

Preparation

You received the CFM TWAIN 7.00 STI driver as ZIP-file via e-mail or on CD. Please copy the unzipped CFM STI 7.00 driver files in a temporary directory. In addition please have the **Windows 98** or **ME installation CD** ready for use.

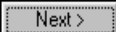
First installation

Connect the scanner to your computer according to the manufacturer's instructions. Turn on the scanner first and then the PC. If the scanner is connected the first time to this PC, the operating system detects it as new device and the Hardware Wizard starts.

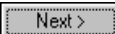


Click on .



Select „Search for the best driver for your device (Recommended)“ and click on  .




Select „Specify a location:“ and type in the temporary directory as valid path. Click on  .

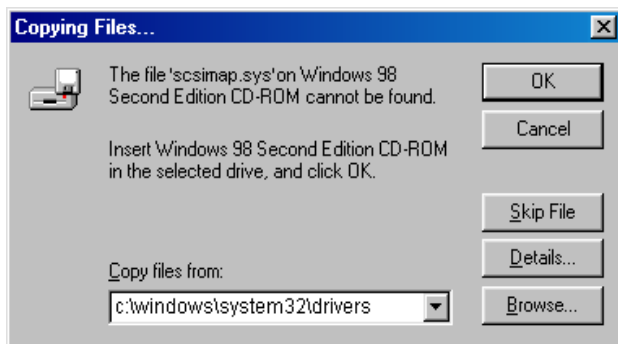


Installation of the CFM 7.00 Still Image (STI) device driver WINDOWS 98/ME



Click on .

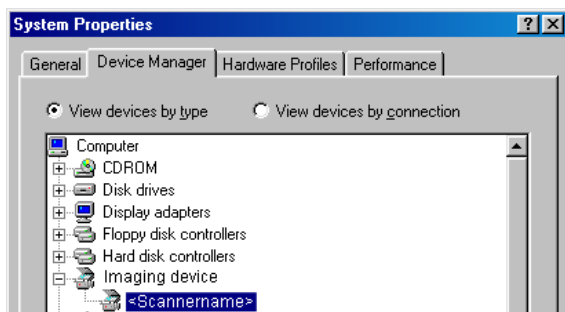
During the installation it is necessary to install a system file. A message is displayed by the hardware assistant. Click on  and type in „C:\Windows\System32\Drivers“ as valid path.



If the file is not already installed, an error message appears. In this case please place the **Windows 98 or ME Installations-CD** into the CD-ROM drive and browse for the appropriate file. The driver installation continues automatically.



Click on .



The scanner is now listed in the directory „Imaging Device“ of the Device Manager.

Start a scan application and select the „CFM <scannername>“ driver as valid source.


The installation and selection of the the driver is complete now and the scanner is ready for use.



Driver update

To replace an existing device driver please proceed as follows:

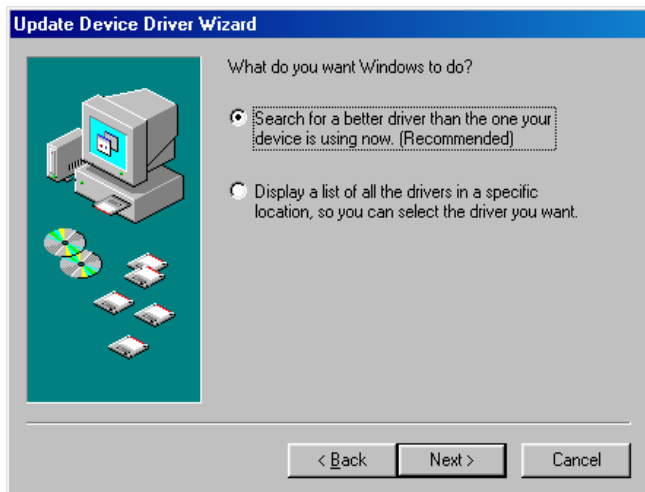


Open the Device Manager, click with the right mouse button on the scanner listed below directory Imaging Device, and select „Properties“ from the appearing menu. In the next window change to the „Driver“ tab and click on .

The Update Device Driver Wizard starts.




Click on .



Select „Search for a better driver than the one your device is using now. (Recommended)“.

Click on .



Cancel all selections and click on .



Installation of the CFM 7.00 Still Image (STI) device driver WINDOWS 98/ME



This window shows the directory and the installation filename (INF) of an already installed driver. Start the Windows Explorer, change to this directory and delete this INF file.

Tip

If the subdirectory INF is not shown in the Windows Explorer, click on „Tools“ -> „Folder Options...“. Change to tab „View“ und select „Show hidden files and folders“.

Close the Windows Explorer.

Click on .



Select „Specify a location“ and type in the temporary directory as valid path.

Click on .

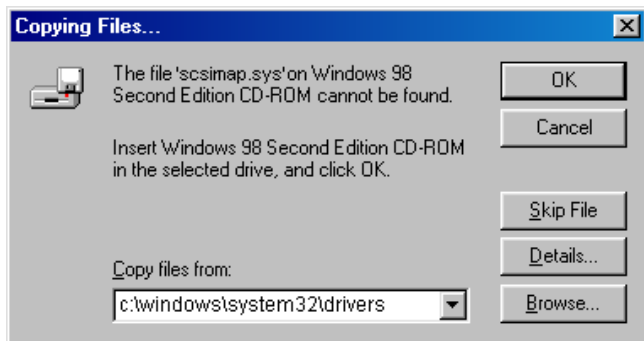


Click on .



Installation of the CFM 7.00 Still Image (STI) device driver WINDOWS 98/ME

During the installation it is necessary to install a system file. When this message appears, click on **OK** and type in „C:\Windows\System32\Drivers“ as valid path.



Click on **OK** to continue the update installation



Click on **Finish**. The driver update is complete now. Start a scan application and select the „CFM <Scannername>“ driver as valid source.



Installation of the CFM 7.00 Still Image (STI) device driver for Windows 2000

Preparation

You received the CFM TWAIN 7.00 STI driver as ZIP-file via e-mail or on CD. Please copy the unzipped CFM STI 7.00 driver files in a temporary directory.

First installation

Connect the scanner to your computer according to the manufacturer's instructions. Turn on the scanner first and then the PC. If the scanner is connected the first time to this PC, the operating system detects it as new device and the Hardware Wizard starts.




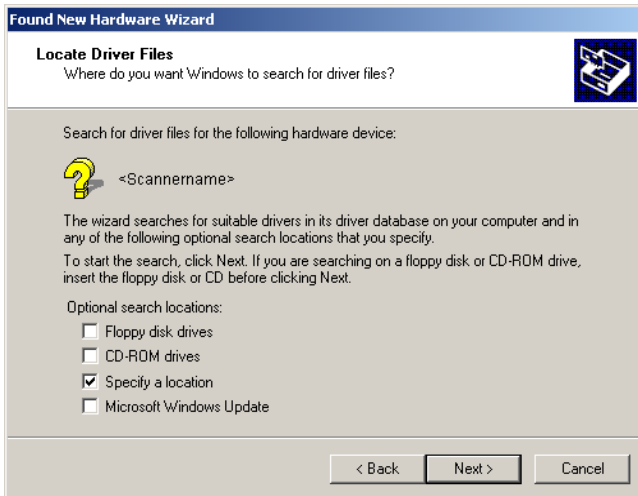
Click on .




Installation of the CFM 7.00 Still Image (STI) device driver WINDOWS 2000



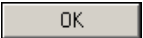
Select „Search for a suitable driver for my device (recommended)“ and click on .

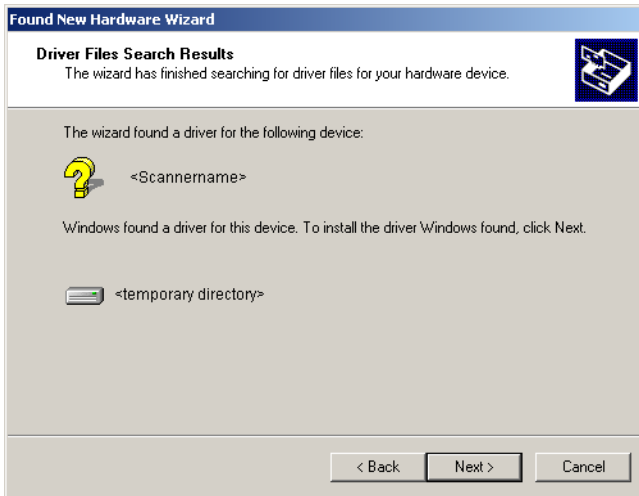


Select „Specify a location“ and click on .

Installation of the CFM 7.00 Still Image (STI) device driver
WINDOWS 2000



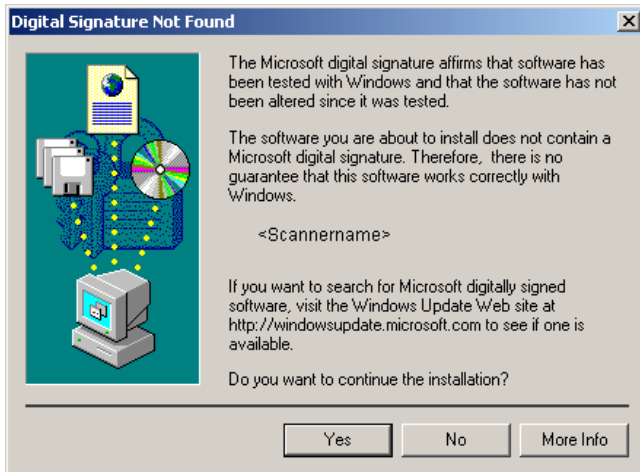
Type in the temporary directory as valid path. Click on .



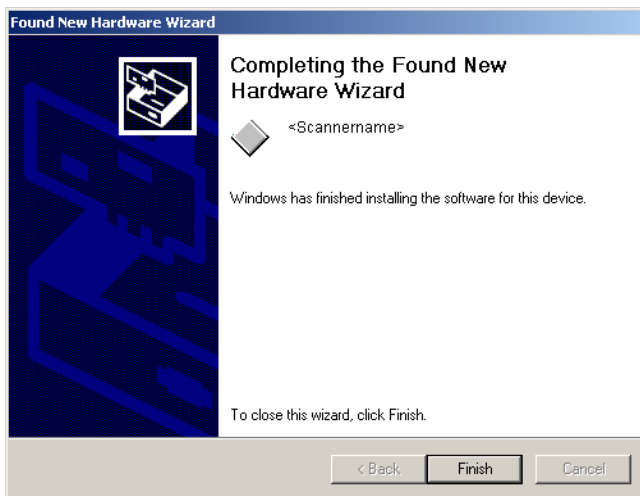
Click on .



Installation of the CFM 7.00 Still Image (STI) device driver WINDOWS 2000

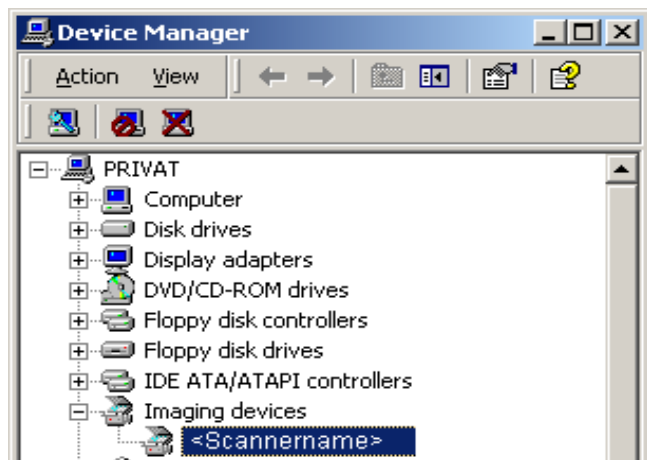


Click on .



Click on .

The scanner is now listed in the directory „Imaging devices“ of the Device Manager.



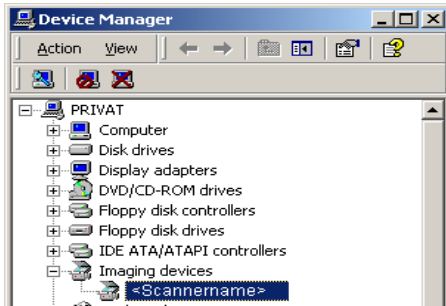
Start a scan application and select the „CFM <scannername>“ driver as valid source.

The installation and selection of the driver is complete now and the scanner is ready for use.

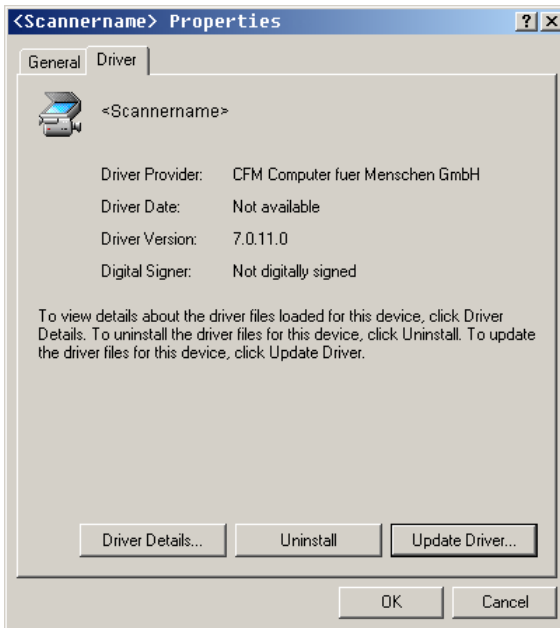


Driver update

To replace an existing device driver please proceed as follows:



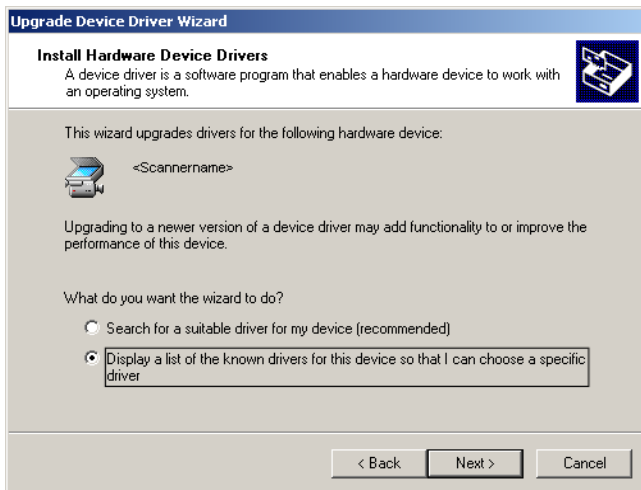
Open the Device Manager, click with the right mouse button on the scanner listed in the directory „Imaging devices“ and select „Properties“ from the appearing menu.



Click on . The Upgrade Device Driver Wizard starts.



Click on .

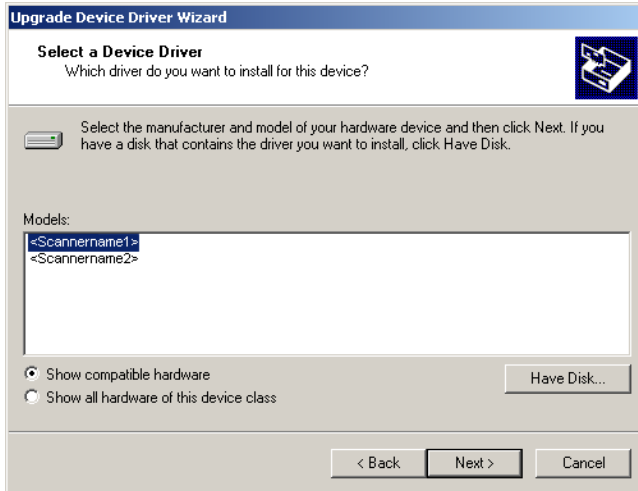


Select „Display a list of the known drivers for this device ...“

Click on .

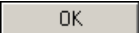


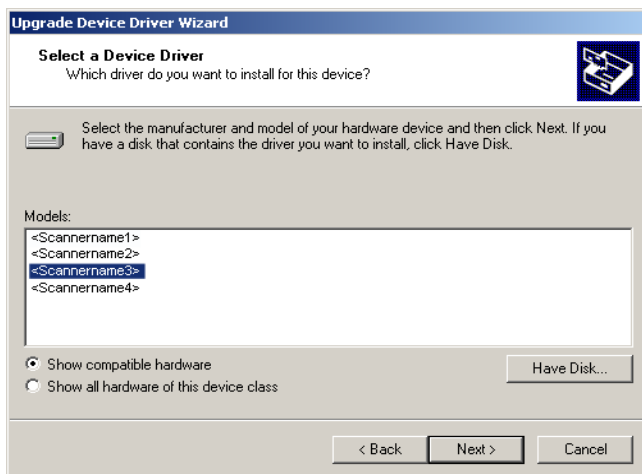
Installation of the CFM 7.00 Still Image (STI) device driver WINDOWS 2000




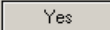
Already installed drivers are listed here. Click on .

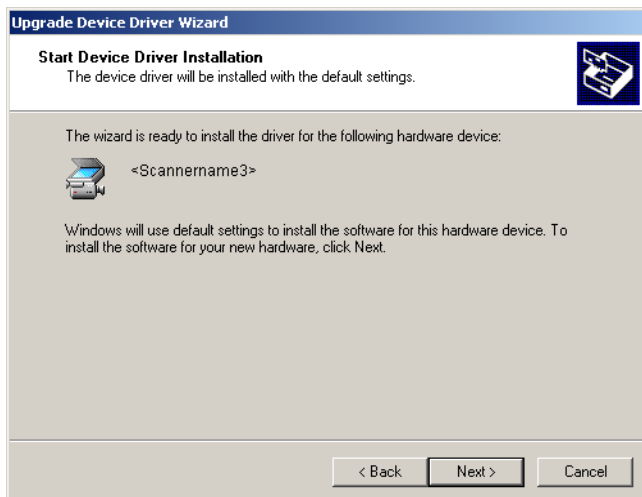


Type in the temporary directory as valid path. Click on .



Select the appropriate scanner type and click on .

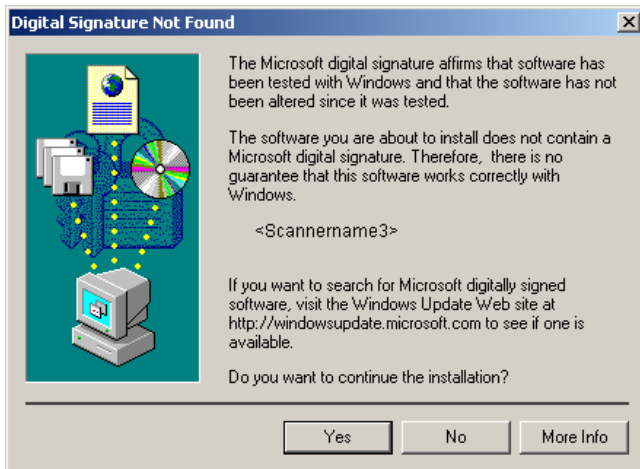
If a warning message appears, confirm it with .



Click on .




Installation of the CFM 7.00 Still Image (STI) device driver WINDOWS 2000



Click on .



Click on . The driver update is complete now. Close the Device Manager and start a scan application to select the new driver as valid source.



Installation of the CFM 7.00 Still Image (STI) device driver for Windows XP

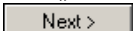
Preparation

You received the CFM TWAIN 7.00 STI driver as ZIP-file via e-mail or on CD. Please copy the unzipped CFM STI 7.00 driver files in a temporary directory.

First installation

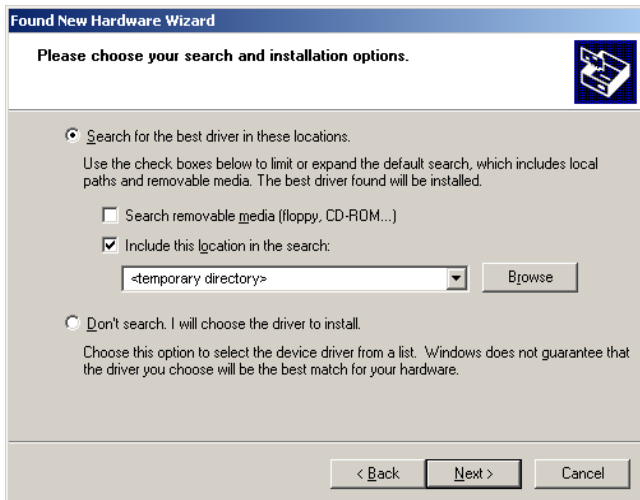
Connect the scanner to your computer according to the manufacturer's instructions. Turn on the scanner first and then the PC. If the scanner is connected the first time to this PC, the operating system detects it as new device and the Hardware Wizard starts.

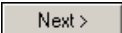


Select the option „Install from a list or specific location (Advanced)“ and click on  .

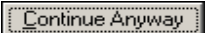


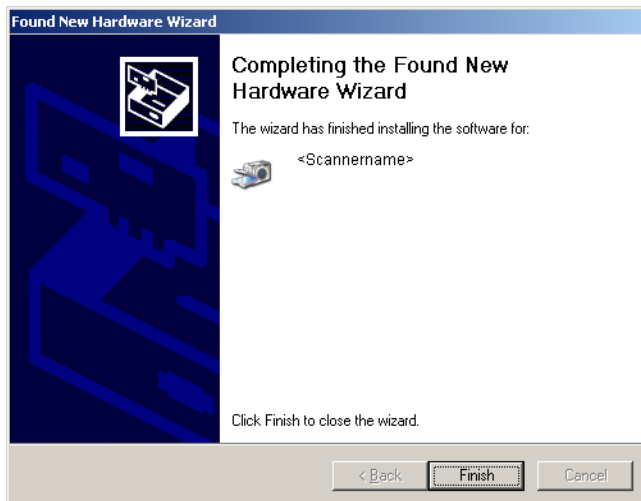
Installation of the CFM 7.00 Still Image (STI) device driver WINDOWS XP



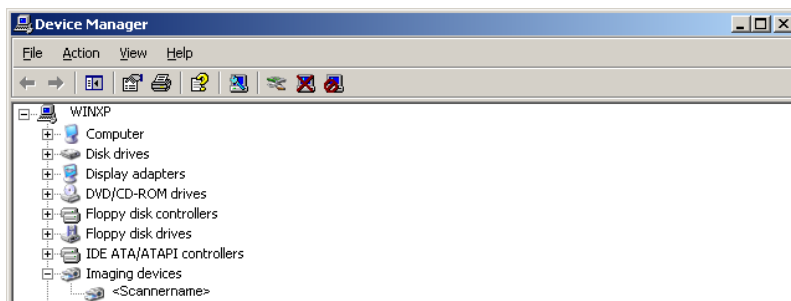
Select „Include this location in the search.“ and type in the temporary directory as valid path. Click on 



Click on 



Click on .



The scanner is now listed in the directory „Imaging device“ of the Device Manager.

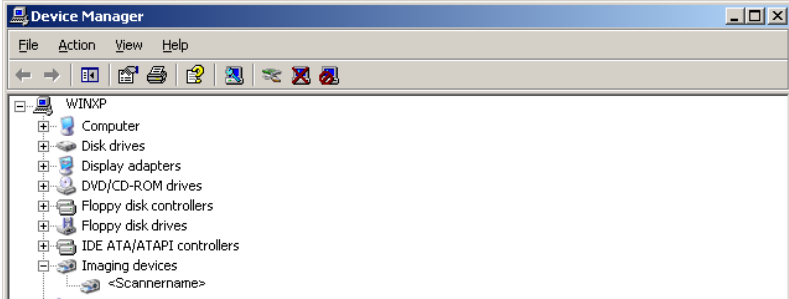
Start a scan application and select the „CFM<Scannername>“ driver as valid source.

The installation and selection of the driver is complete now and the scanner is ready for use.

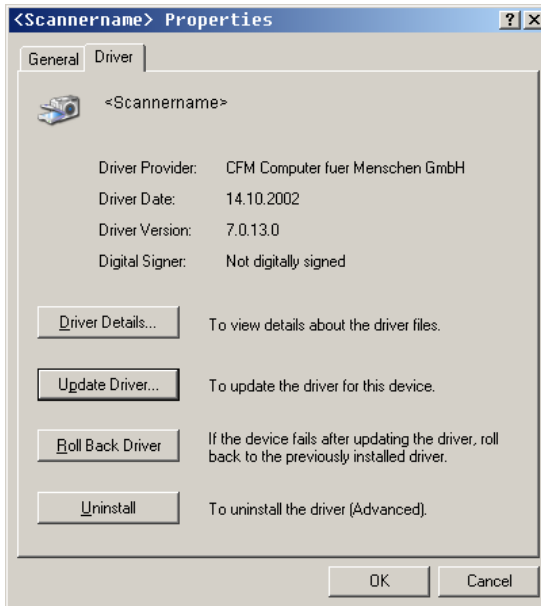


Driver update

To replace an existing device driver please proceed as follows:

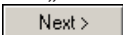


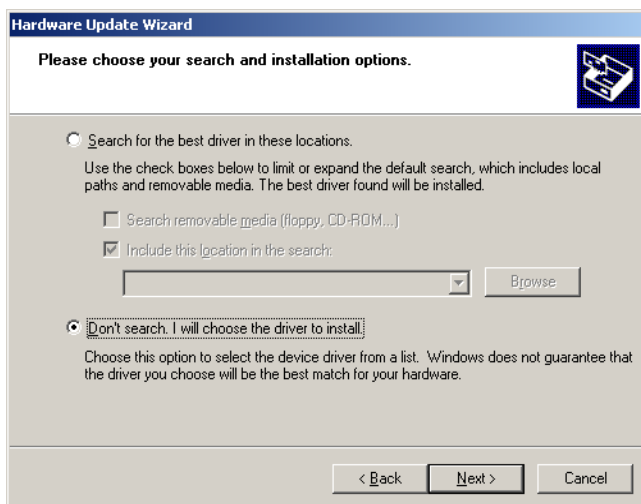
Open the Device Manager, click with the right mouse button on the scanner listed below „Imaging devices“ and select „Properties“ from the appearing menu.




Select „Driver“ tab and click on  .



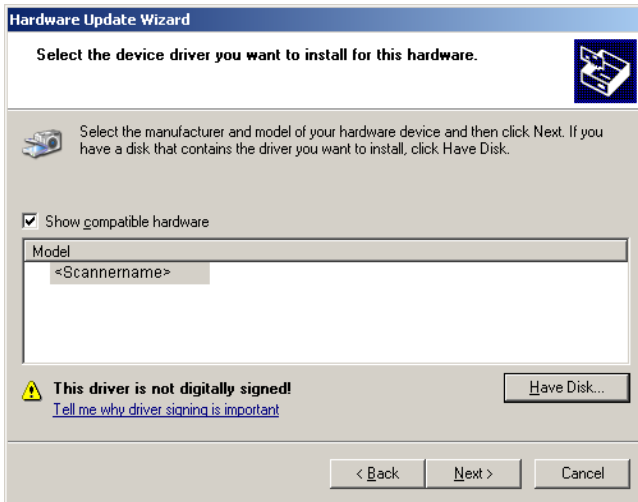
Select „Install from a list or specific location (Advanced)“ and click on .



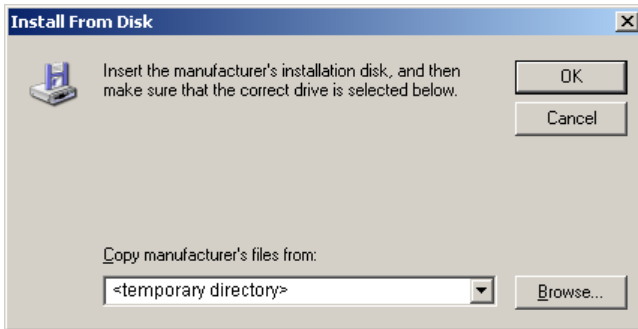
Select „Don't search. I will choose the driver to install“. Click on .



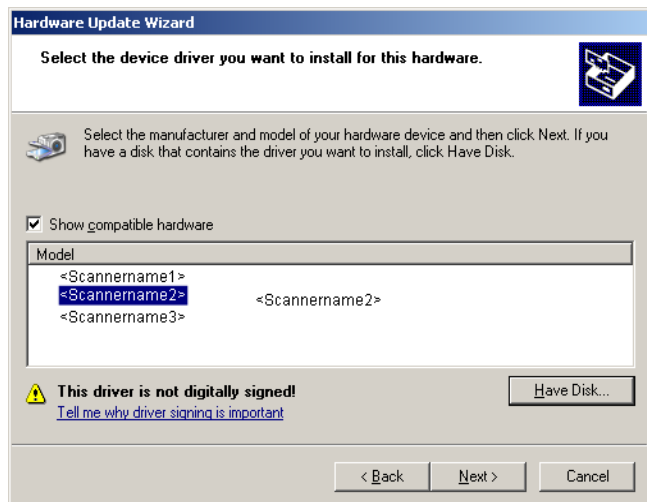
Installation of the CFM 7.00 Still Image (STI) device driver WINDOWS XP

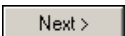


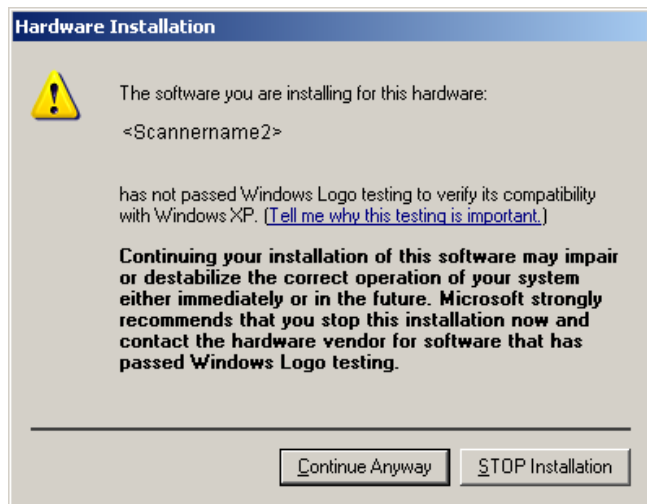
Click on .

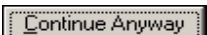


Type in the temporary directory as valid path. Click on .



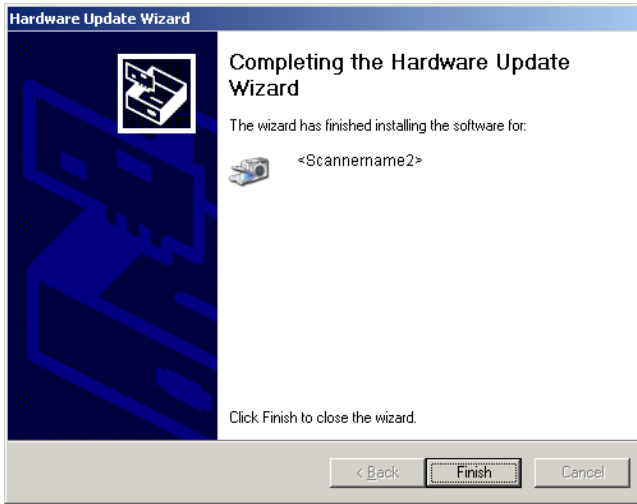
Select the appropriate scanner type and click on .




Click on .



Installation of the CFM 7.00 Still Image (STI) device driver WINDOWS XP



Click on  to close the Hardware Update Wizard. The driver update is complete now.

Start a scan application to select the new driver as valid source.